



ONMSi 2.92 – Release Note

ONMSi V2.92

Release Note

Author(s) : Jean Ponchon
File name : Release Note ONMSi 2.92 Rev4.docx
Creation date: 04/11/2016
Last modification : 28/02/2017



ONMSi 2.92 – Release Note

CONTENTS

1. ONMSi 2.92 REVISION 1	5
1.1 ONMSi 2.92 REVISION 1	5
1.1.1 SW IMPROVEMENTS:	5
1.1.2 BUG FIXING	5
1.1.3 REMARKS	5
1.2 ONMSi TOOLS 1.34.2.0	5
1.2.1 SW IMPROVEMENTS	5
1.2.2 BUG FIXING	6
1.2.3 REMARKS	6
1.3 OFM 3.72	6
1.3.1 SW IMPROVEMENTS	6
1.3.2 BUG FIXING	6
1.3.3 REMARKS	6
1.4 EOTU8000E – E98OTU-FP-RF 6.26	6
1.4.1 SW IMPROVEMENTS:	6
1.4.2 BUG FIXING	6
1.4.3 REMARKS	6
2. ONMSi 2.92 REVISION 2	7
2.1 OTU8000 3.36	7
2.1.1 BUGS FIXING	7
2.2 EOTU8000E – E98OTU-FP-RF 6.28	7
2.2.1 BUG FIXING	7
3. ONMSi 2.92 REVISION 3	8
3.1 ONMSi 2.92.1	8
3.1.1 SW IMPROVEMENTS:	8
3.2 ONMSi MIGRATION TOOL V2.92.0.0	8
3.2.1 SW IMPROVEMENTS:	8
4. ONMSi 2.92 REVISION 4	9
4.1 ONMSi 2.92.2.0	9
4.1.1 SW IMPROVEMENTS:	9
4.1.2 BUG FIXING	9
4.2 OFM 3.72.2	9



ONMSi 2.92 – Release Note

4.2.1	SW IMPROVEMENTS	9
4.2.2	BUG FIXING	9
4.3	ONMSi TOOLS 1.34.3.2	9
4.3.1	SW IMPROVEMENTS	9
4.4	EOTU8000E – E98OTU-FP-RF 6.30	9
4.4.1	SW IMPROVEMENTS	9
4.4.2	BUG FIXING	9
5.	SOFTWARE COMPATIBILITY	10
5.1	REVISION 1	10
5.2	REVISION 2	11
5.3	REVISION 3	12
5.4	REVISION 4	13
6.	SOFTWARE UPGRADE	14
6.1	ONMSi ON ACTIVE SERVER	14
6.1.1	CLEAN OLD BUDGETS	15
6.1.1	BEFOREUPDATE	16
6.1.2	UNINSTALL ONMSi	16
6.1.3	UNINSTALL JERICHO	17
6.1.4	ONMSi INSTALLATION	18
6.2	ONMSi TOOLS ON ACTIVE SERVER	23
6.2.1	INSTALLATION	23
6.2.2	BACKUP	24
6.3	ONMSi TOOLS ON PASSIVE SERVER	25
6.3.1	INSTALLATION	25
6.3.2	REBUILD STANDBY	25
6.4	ONMSi ON PASSIVE SERVER	26
6.5	JERICHO	26
6.6	OTU	26
6.7	DATABASE INTEGRITY CHECK	27



ONMSi 2.92 – Release Note

Version	Date	Author	Index	Main Improvement
2.92	04 Nov 16	J. Ponchon	Revision 1	ONMSi v2.92 ONMSi Tools v1.34.2 OFM v3.72 OTU8000 v6.26
2.92	6 Dec 16	J. Ponchon	Revision 2	ONMSi v2.92 ONMSi Tools v1.34.2 OFM v3.72 OTU8000 v3.36 OTU8000E/ E980TU-FP-RF v6.28
2.92	9 Dec 16	J. Ponchon	Revision 3	ONMSi v2.92.1.0 ONMSi Migration tool V2.92.0.0
2.92	15 Feb 17	S. Gérenton	Revision 4	ONMSi v2.92.2.2 OFM v3.72.2 ONMSi Tools v1.34.3.2 OTU8000E/ E980TU-FP-RF v6.30

ONMSi 2.92 – Release Note

1. ONMSi 2.92 Revision 1

1.1 ONMSi 2.92 Revision 1

1.1.1 SW Improvements:

- ONMSi must not be vulnerable to CSRF (aka XSRF)
- EPT#6050 Audit log file in read access (case 00545537)
- **EPT#6106 Formatted text in landmark table comment column**

1.1.2 BUG Fixing

- EPT#6125 Link with patchcords is now highlighted up to the end on ONMSi map
- EPT#6092 Fix level values of markers A&B in the TraceViewer
- EPT#6080 API alarm event blocked for link with OFM
- EPT#6076 Wrong name for alarm detection trace
- EPT#6057 Error message when creating link
- EPT#6056 With very long link name, edit button disappear
- EPT#6019 Optical alarm event detail with wrong description
- EPT#6143 Fix Traceviewer Zoom In with Mouse wheel with IE
- EPT#6142 Fix Defaut Monitoring when creating a new test
- EPT#6135 Fix download traces tables as PDF/Excel from test configuration screen
- EPT#6132 Fix search that shows only 10 results
- EPT#6116 Report generation crash
- EPT#6153 Fix Landmark display on the OTDR trace

1.1.3 Remarks

Compatible with

- OTU8000 >= 3.24
- OTU8000e >= 5.04

1.2 ONMSi Tools 1.34.2.0

1.2.1 SW Improvements

- Dashboard only refreshed on change
- EPT 5959: OTU visibility improvement
- EPT 6074: Cygwin shortcut again on desktop
- EPT 6075: Added database corrupted block detection
 - ONMSi alarm new database backup additional text: ERROR_CODE:CORRUPTED
 - Backup stopped when detecting corrupted blocks

ONMSi 2.92 – Release Note

1.2.2 BUG Fixing

1.2.3 Remarks

1.3 OFM 3.72

1.3.1 SW Improvements

Compatibility with ONMSi 2.92

1.3.2 BUG Fixing

- #5744 No alarm in OFM when alarm is localized on a patch cord
- Excel import stopped after first line containing an empty first cell

1.3.3 Remarks

Client stations do not need to upgrade if they are in version 3.

1.4 EOTU8000E – E98OTU-FP-RF 6.26

1.4.1 SW Improvements:

-

1.4.2 BUG Fixing

- EPT#5901: Changing the scheduling of a test in alarm must not clear the alarm
- EPT#5893: On demand measurement has the highest priority even when time slots are used
- EPT#5923: PON test and PON measurement failure crash the OTU.
- EPT#5967: OTU Link not monitored does not report any alarm.
- EPT#6117: Strange effect on OTDR Trace with E8118RUHR65 OTDR
- EPT#6046: FO crash with module C tri-lambda

1.4.3 Remarks

Compatible with

- ONMSi \geq 2.70



ONMSi 2.92 – Release Note

2. ONMSi 2.92 Revision 2

2.1 *OTU8000* 3.36

2.1.1 Bugs fixing

EPT 6137: Alarm injection not visible from fiber budget chart

EPT 6097: Wrong Switch topology applied after a reboot when an external switch has failed

2.2 *EOTU8000E – E98OTU-FP-RF* 6.28

2.2.1 BUG Fixing

SSH Incompatibility with ONMSi <=2.80



ONMSi 2.92 – Release Note

3. ONMSi 2.92 Revision 3

3.1 ONMSi 2.92.1

3.1.1 SW Improvements:

- Alarm duration displayed in the alarm viewer
- EPT#6150 / case#5886: Landmarks OTDR distance are kept when the reference is changed
- EPT#6149 / case#5872: Landmarks are displayed with OTDR traces for all the tests when at least one test has the association with events
- EPT#6136 / Case#5887: Landmarks can be associated with OTDR distance out of OTDR events
- EPT#6205 / Case#598769: Alarm viewer column change needs users to logon with appropriate permissions

3.2 ONMSi Migration Tool V2.92.0.0

3.2.1 SW Improvements:

- when using LDAP (use.ldap=true), update already existing users (from OFM to OFMi migration) to use it
- trac # 5876: add an option (use.onmsi.fiber.index=true) for the migration tool to use ONMSi default fiber index over the ONMS link fiber index when taking reference measurement

ONMSi 2.92 – Release Note

4. ONMSi 2.92 Revision 4

4.1 ONMSi 2.92.2.2

4.1.1 SW Improvements:

- OTU hard drive switch-over
- EPT#6261 German translation is now up-to-date
- Add timeouts to asynchronous OTU connection test
- EPT#6162 ONMSi accessibility: show the context menu with a keyboard shortcut

4.1.2 BUG Fixing

- Cannot access link dashboard with 2 tests with different number of associated optical events
- Trace History Export to the file system is no more limited to 20 tests by default
- Fix OTU connection problem
- Ept 6282 Problem with LDAP users having common characters

4.2 OFM 3.72.2

4.2.1 SW Improvements

Compatibility with ONMSi 2.92.2.2

4.2.2 BUG Fixing

- EPT 6268 In OFM clearing an alarm kills remote EJB and prevents further logins
- EPT 6277 When importing cables from excel, originId is mandatory even if originIdExt is set
- EPT 6179 Cannot set user permissions when login contains special characters
- EPT 6269 Remove ONMSwmsServer - Weak overlapping warning message

4.3 ONMSi Tools 1.34.3.2

4.3.1 SW Improvements

Compatibility with ONMSi 2.92.2.2

4.4 EOTU8000E – E98OTU-FP-RF 6.30

4.4.1 SW Improvements

EPT 6264 Fix CURL vulnerability

4.4.2 BUG Fixing

- EPT 6256 OTU not reachable when eth0 is set to 100Mb Full Duplex (Auto Negotiation Off)

ONMSi 2.92 – Release Note

5. Software compatibility

This compatibility table must be strictly respected.

5.1 Revision 1

Date	November 2016
Revision	1
OS for server	64-bits Windows Server 2008 R2 Standard SP1 or Enterprise SP1 64-bits Windows Server 2012 R2 Standard or Enterprise
Oracle	11G
ONMSi	2.92.0.0
Browser	Internet Explorer 9 Minimum, 11 or above Recommended Firefox 10 or above Google Chrome 16 or above
ONMSi Tools	1.34.2.0
OFM server	3.72.0.0
OFM client	>= 3.70.x / 3.70.2.2
Jericho	4 build 41 only needed with E9iSMSModem
OTU8000	>= 3.24 / 3.34
OTU8000 boot	4.00
OTU8000 rescue	3.34
OTU8000e	>= 5.04 / 6.26
OTU8000e rescue	6.26

Legend

New release displayed in **bold**

Dependency software displayed with same colour (except black)

Software version description

Most of our applications releases contain 4 digits.

- First digit = Major design change
- Second digit = New features , improvements
- Third digit = Maintenance patch
- Fourth digit = Reserved VIAVI (build)

ONMSi 2.92 – Release Note

5.2 Revision 2

Date	December 2016
Revision	2
OS for server	64-bits Windows Server 2008 R2 Standard SP1 or Enterprise SP1 64-bits Windows Server 2012 R2 Standard or Enterprise
Oracle	11G
ONMSi	2.92.0.0
Browser	Internet Explorer 9 Minimum, 11 or above Recommended Firefox 10 or above Google Chrome 16 or above
ONMSi Tools	1.34.2.0
OFM server	3.72.0.0
OFM client	>= 3.70.x / 3.70.2.2
Jericho	4 build 41 only needed with E9iSMSModem
OTU8000	>= 3.24 / 3.36
OTU8000 boot	4.00
OTU8000 rescue	3.36
OTU8000e	>= 5.04 / 6.28
OTU8000e rescue	6.28

Legend

New release displayed in **bold**

Dependency software displayed with same colour (except black)

Software version description

Most of our applications releases contain 4 digits.

- First digit = Major design change
- Second digit = New features , improvements
- Third digit = Maintenance patch
- Fourth digit = Reserved VIAVI (build)

ONMSi 2.92 – Release Note

5.3 Revision 3

Date	December 2016
Revision	3
OS for server	64-bits Windows Server 2008 R2 Standard SP1 or Enterprise SP1 64-bits Windows Server 2012 R2 Standard or Enterprise
Oracle	11G
ONMSi	2.92.1.0
Browser	Internet Explorer 9 Minimum, 11 or above Recommended Firefox 10 or above Google Chrome 16 or above
ONMSi Tools	1.34.2.0
OFM server	3.72.0.0
OFM client	>= 3.70.x / 3.70.2.2
Jericho	4 build 41 only needed with E9iSMSModem
OTU8000	>= 3.24 / 3.36
OTU8000 boot	4.00
OTU8000 rescue	3.36
OTU8000e	>= 5.04 / 6.28
OTU8000e rescue	6.28

Legend

New release displayed in **bold**

Dependency software displayed with same colour (except black)

Software version description

Most of our applications releases contain 4 digits.

- First digit = Major design change
- Second digit = New features , improvements
- Third digit = Maintenance patch
- Fourth digit = Reserved VIAVI (build)

ONMSi 2.92 – Release Note

5.4 Revision 4

Date	February 2017
Revision	4
OS for server	64-bits Windows Server 2008 R2 Standard SP1 or Enterprise SP1 64-bits Windows Server 2012 R2 Standard or Enterprise
Oracle	11G
ONMSi	2.92.2.2
Browser	Internet Explorer 9 Minimum, 11 or above Recommended Firefox 10 or above Google Chrome 16 or above
ONMSi Tools	1.34.3.2
OFM server	3.72.2.0
OFM client	>= 3.70.x / 3.70.2.2
Jericho	4 build 41 only needed with E9iSMSModem
OTU8000	>= 3.24 / 3.36
OTU8000 boot	4.00
OTU8000 rescue	3.36
OTU8000e E98OTU-FP-RF	>= 5.04 / 6.30
OTU8000e E98OTU-FP-RF rescue	6.30

Legend

New release displayed in **bold**

Dependency software displayed with same colour (except black)

Software version description

Most of our applications releases contain 4 digits.

- First digit = Major design change
- Second digit = New features, improvements
- Third digit = Maintenance patch
- Fourth digit = Reserved VIAVI (build)

ONMSi 2.92 – Release Note

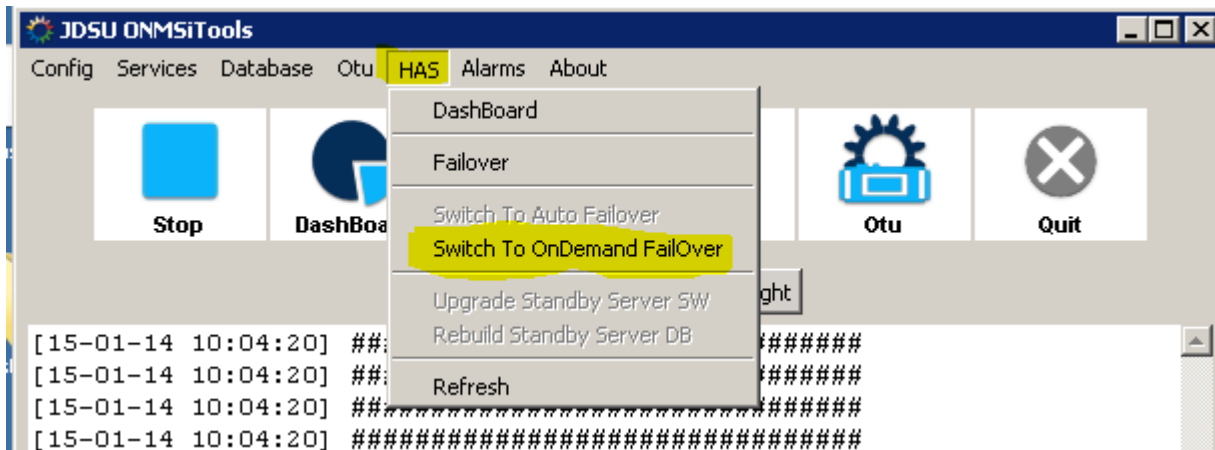
6. Software upgrade

Don't forget to request licenses before starting any upgrade.

For system with backup server, active server must be upgraded first.

6.1 ONMSi on active server

For system with backup, ensure system is configured on "ondemandfailover". If not switch system to this mode.

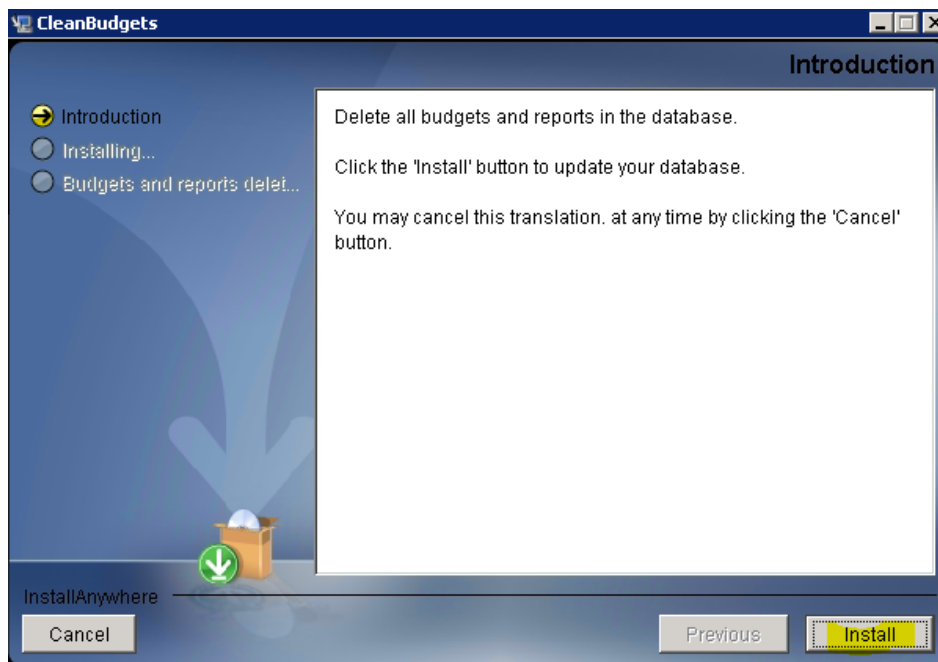
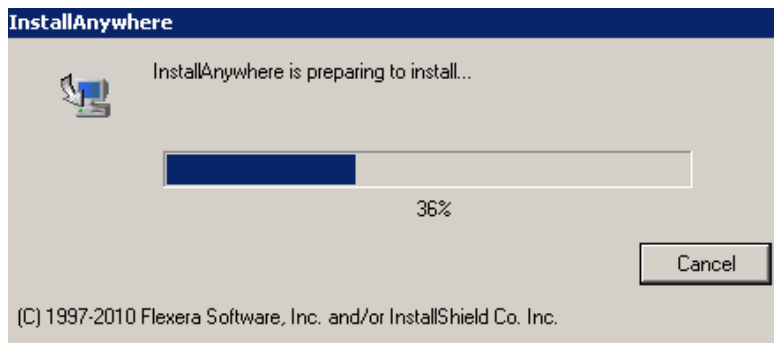


Role	active	Partition C	Use 66% Avail 20GB	Last refresh	07/08/15 09:29:25
Mode	cluster	Partition E	Use 65% Avail 35GB	ToolKit Version	1.30.0.0
Config	ondemandfailover			ToolKit Snmp	

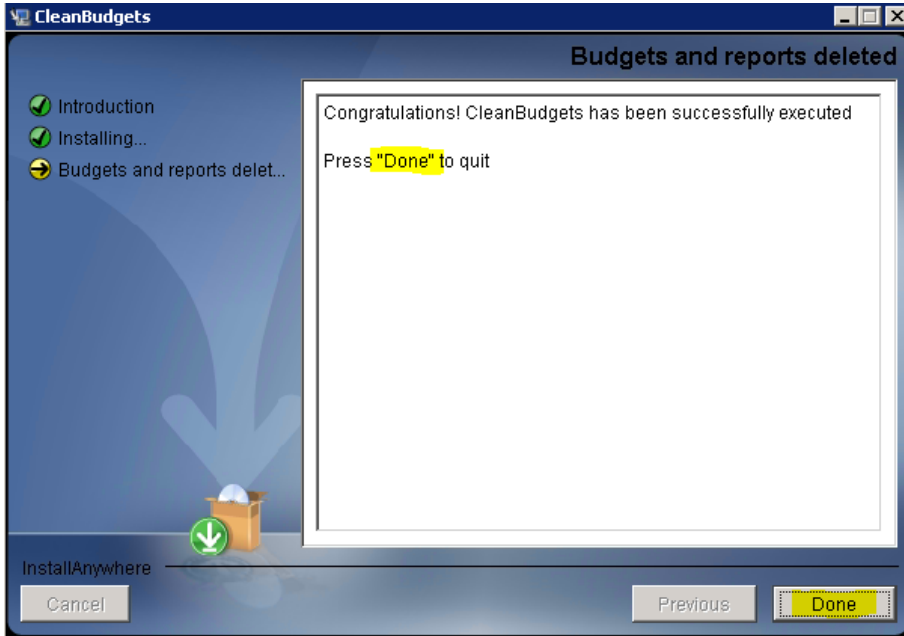
ONMSi 2.92 – Release Note

6.1.1 Clean Old budgets

For upgrade from version 2.5x or lower, execute the program c:\workshop\CleanBudgets.exe to delete old corrupted budgets.



ONMSi 2.92 – Release Note



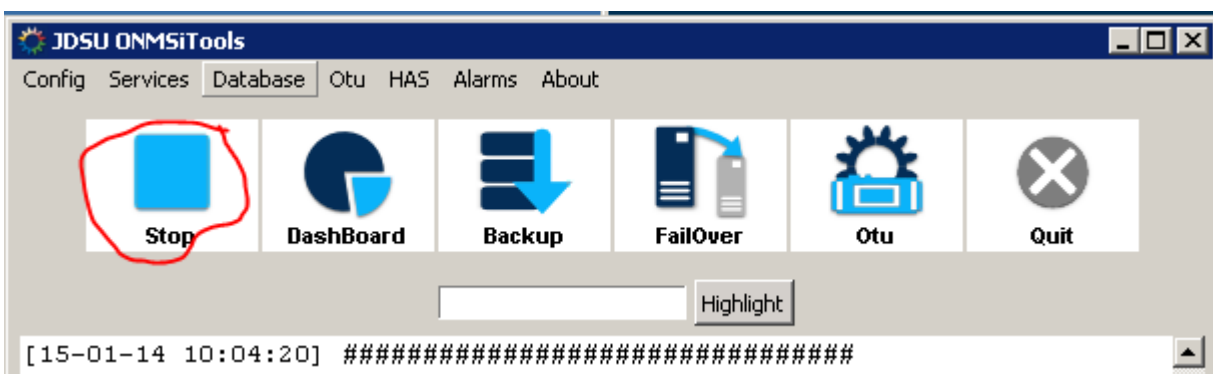
6.1.1 Beforeupdate

We noticed one issue upgrading from old version (2.60) to 2.90 which stopped the upgrade.

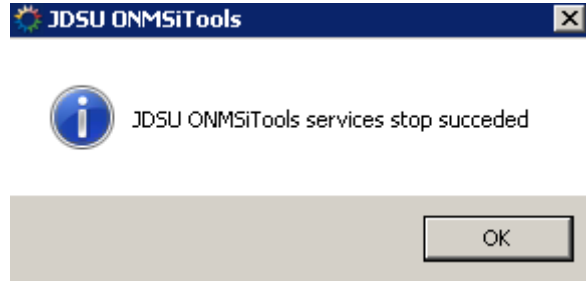
Execute this program to prevent that problem. \Tools\BeforeUpgrade.exe

6.1.2 Uninstall ONMSi

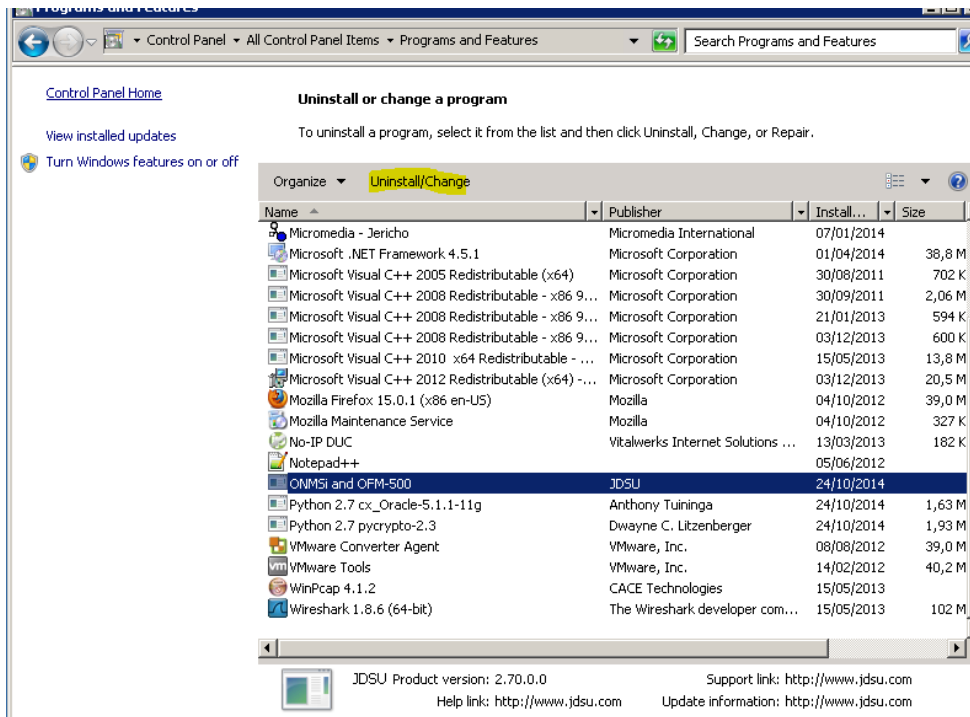
Stop services.



ONMSi 2.92 – Release Note



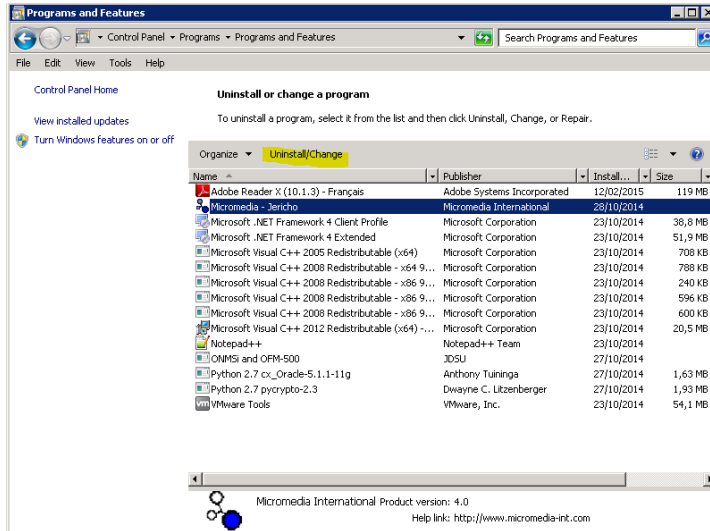
From Control panel menu, uninstall the ONMSi application



6.1.3 Uninstall Jericho

If you do not use GSM modem for SMS it is recommended to uninstall Jericho

ONMSi 2.92 – Release Note



By the end of uninstallation **Reboot server**

6.1.4 ONMSi installation

ONMSi and OFM-500 are both installed with only one setup. OFM is installed only if OFM option is activated in the licence key.

From the DVD: \RFTS_RevX\OFM_V3.x_and_ONMSi_V2.xx\ONMSi-OFM-500\

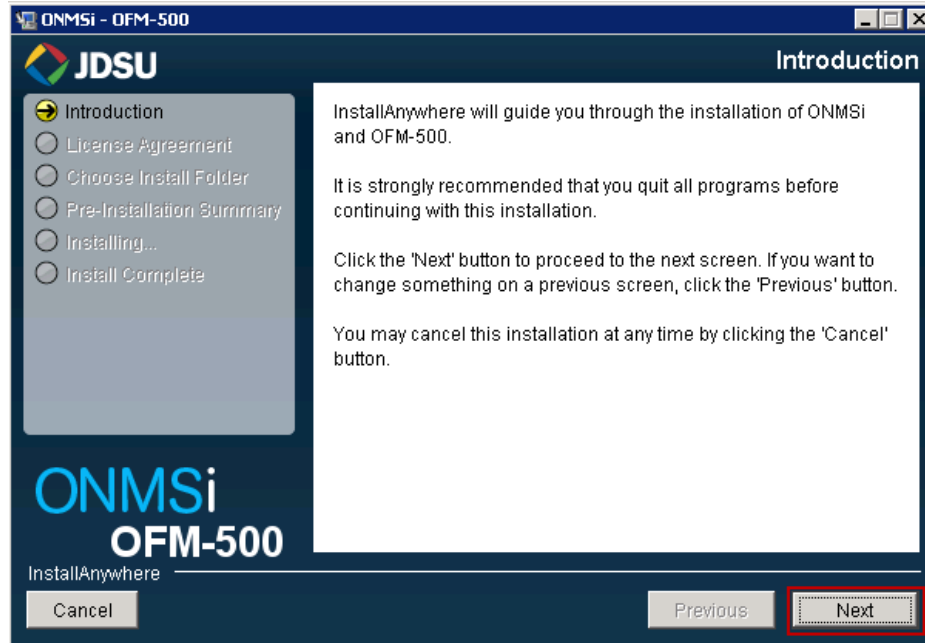
Launch the installed **ONMSi-OFM-500-setup.exe**

InstData	10/12/2011 3:08 PM	Dos:
checkIntegrity.cmd	8/4/2011 1:30 PM	Scrp
hashdeep.exe	5/24/2011 1:32 PM	Appl
onmsi_ofm500.md5	10/4/2011 9:40 AM	Fichi
ONMSi-OFM-500-setup.exe	10/3/2011 3:10 PM	Appl

On the security message click on **Yes** to start the installation process.

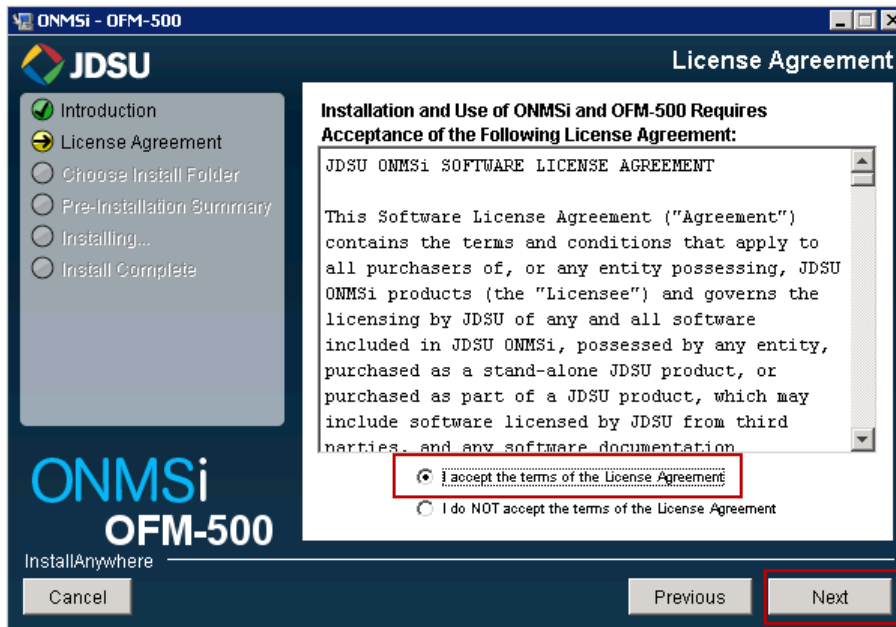
Click on **Next**

ONMSi 2.92 – Release Note



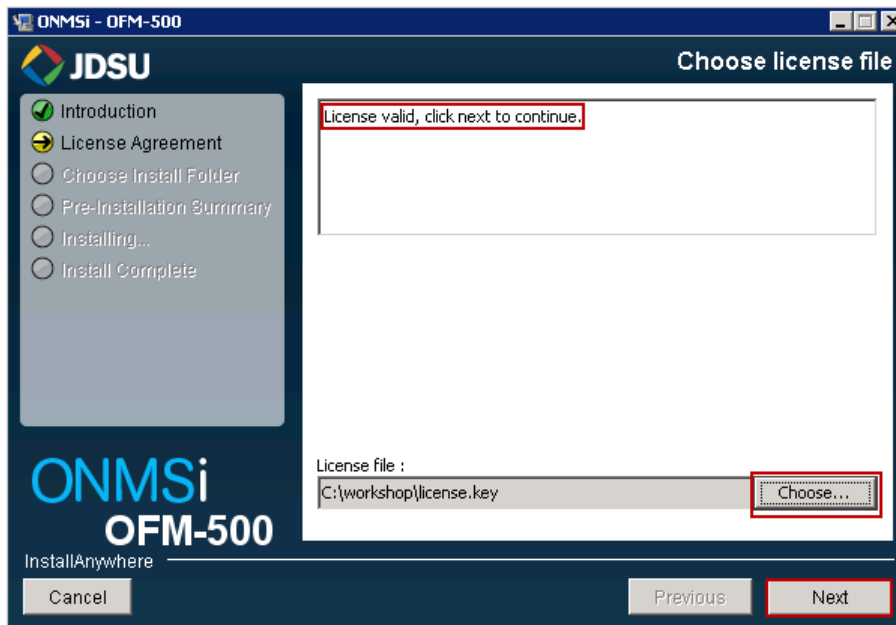
ONMSi 2.92 – Release Note

Click on **I accept** and click on **Next**

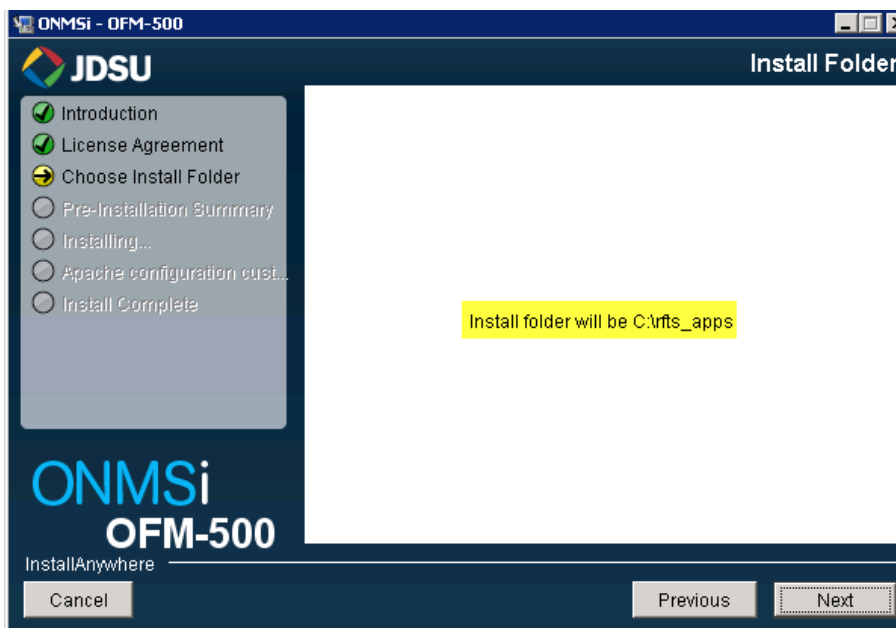
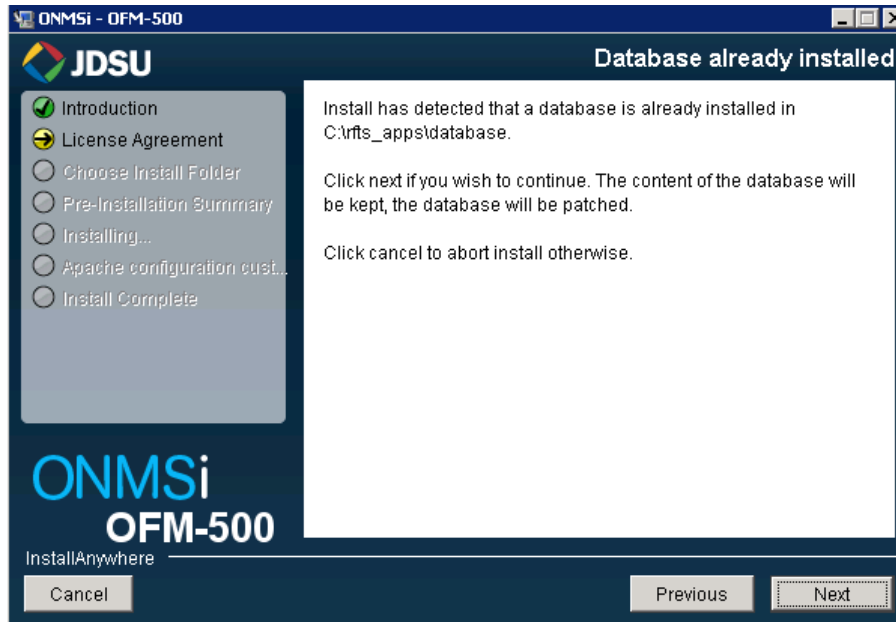


Click on **Choose** to select your licence file

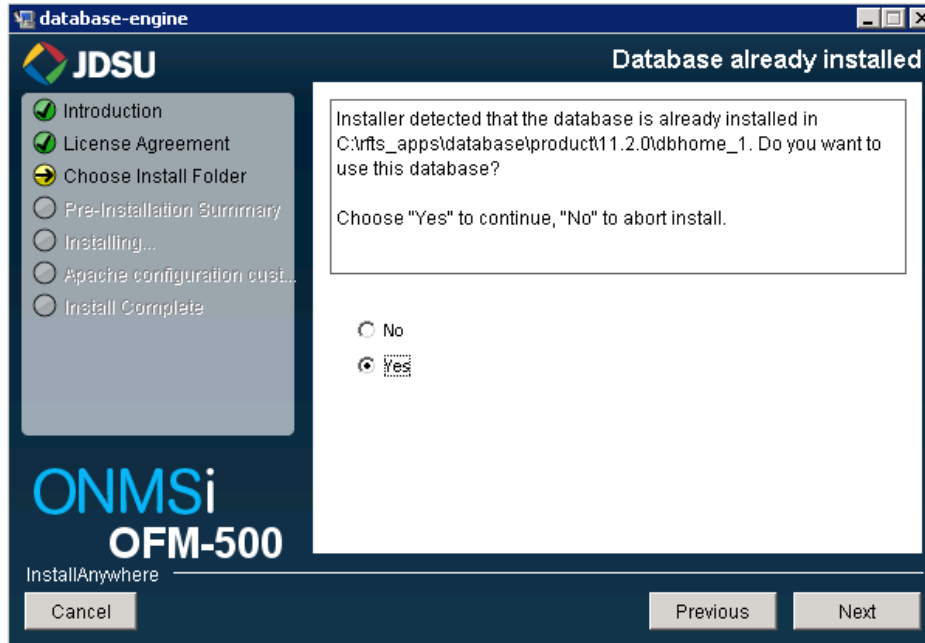
You must see Licence valid to be able to click on **Next**



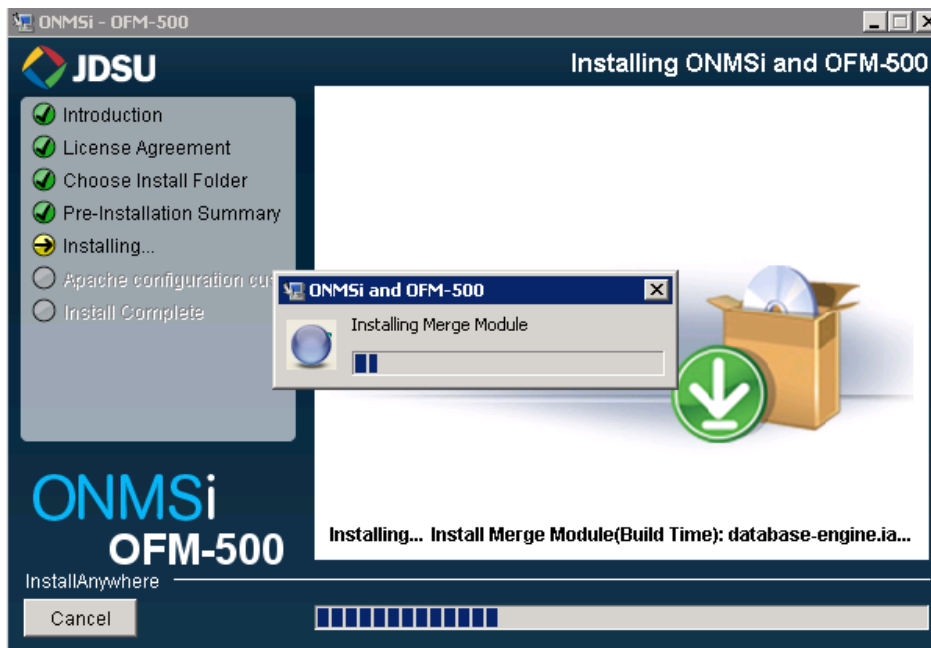
ONMSi 2.92 – Release Note



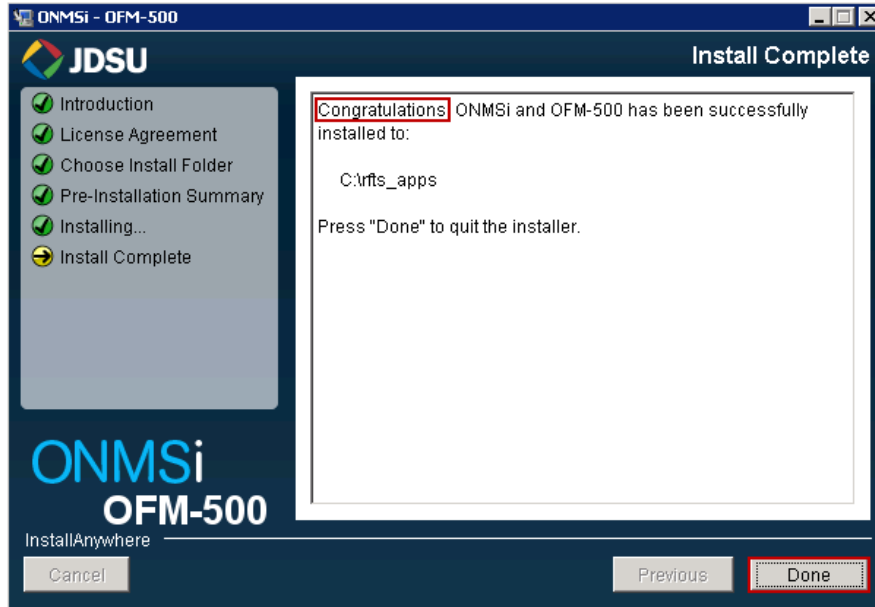
ONMSi 2.92 – Release Note



Select Yes and click on Next



ONMSi 2.92 – Release Note



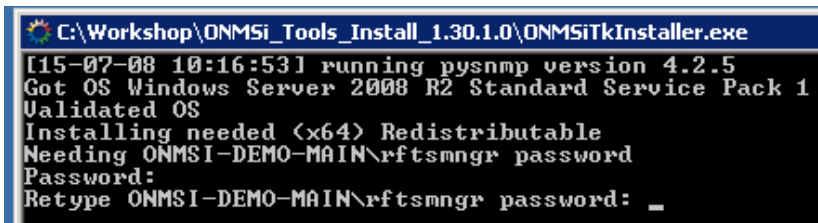
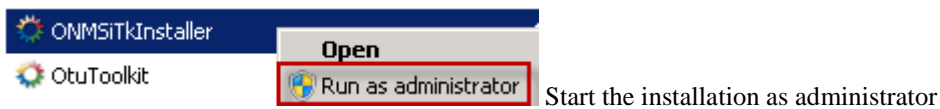
The **OFM software** has been installed during the ONMSi installation according to the licence generate by the Division

6.2 ONMSi Tools on active server

6.2.1 Installation

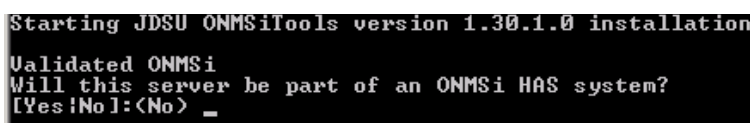
Install over the existing one on active server.

From the ONMSi DVD run ONMSiTkInstaller.exe



enter rftsmngr password and

confirm it



type Yes if you have a standby server

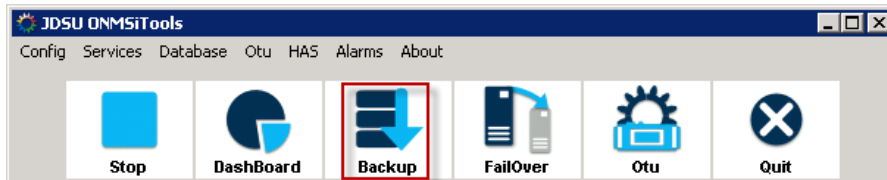
ONMSi 2.92 – Release Note

```
Found a previous installation in c:\NFTS_SCRIPTS:  
Install on c:?  
[Yes;No]:<Yes> _
```

```
Successfully installed JDSU ONMSiTools version 1.30.1.0  
Reboot might be needed  
Type Return to exit_
```

6.2.2 Backup

Force "Backup" after ONMSi tools installed.

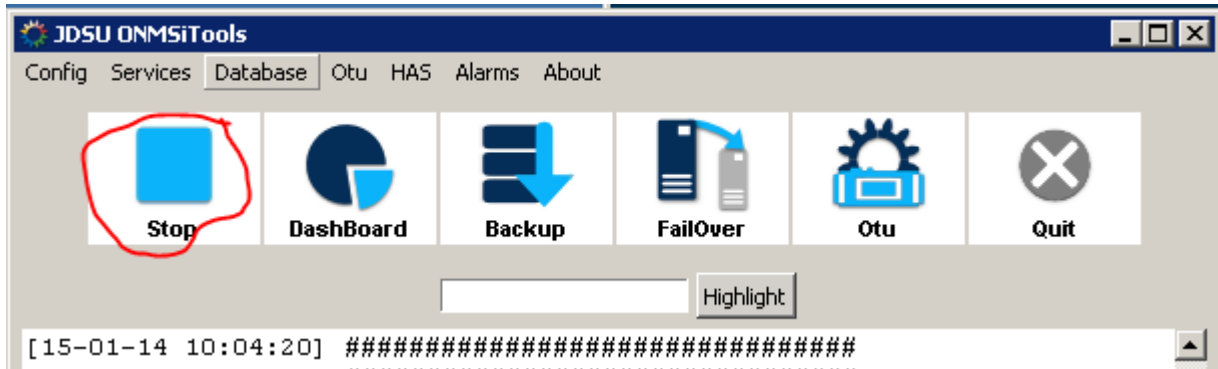


ONMSi 2.92 – Release Note

6.3 ONMSi Tools on passive server

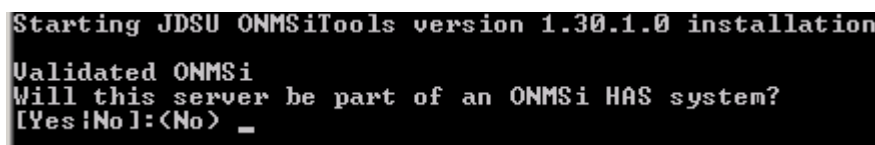
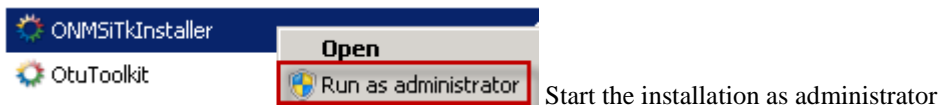
6.3.1 Installation

Stop services.



Install over the existing one on active server.

From the ONMSi DVD run ONMSiTkInstaller.exe

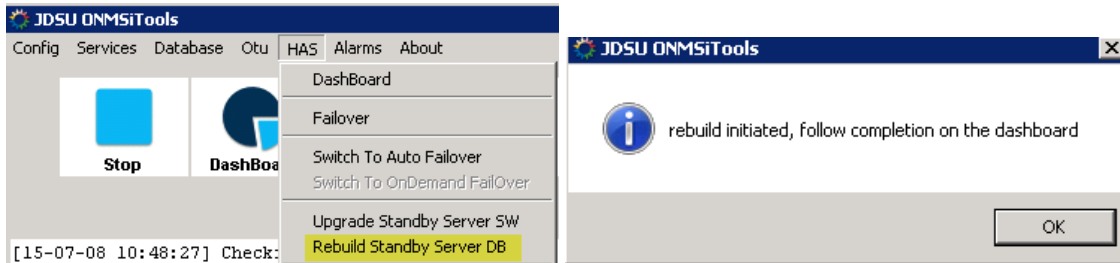


Enter Yes

6.3.2 Rebuild standby

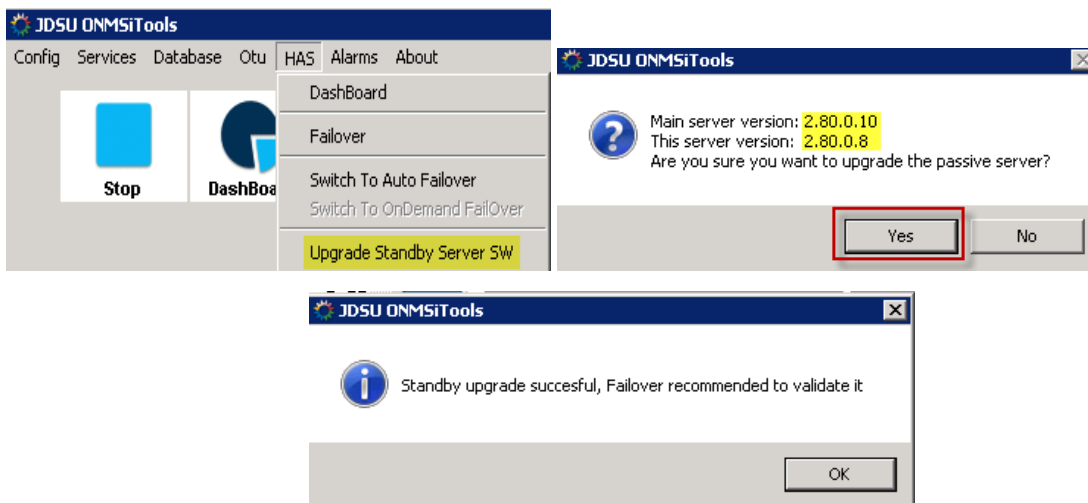
For system with HAS option force "Rebuild Standby server"

ONMSi 2.92 – Release Note



6.4 ONMSi on passive server

Use the toolkit / HAS / Upgrade Standby Server option to upgrade all application. No need to upgrade Mapserver config, database ...



On the backup server, delete the following files if they still exist:

- C:\rfts_apps\jboss\standalone\deployments\topaz-ear-2.80.1.0.ear.dodeploy
- C:\rfts_apps\jboss\standalone\deployments\topaz-standard-reports-2.80.1.0.sar.dodeploy
- C:\rfts_apps\jboss\standalone\data\hibernateSearchIndexes

6.5 Jericho

From Control panel menu, uninstall the Jericho application

Then install the new one.

6.6 OTU

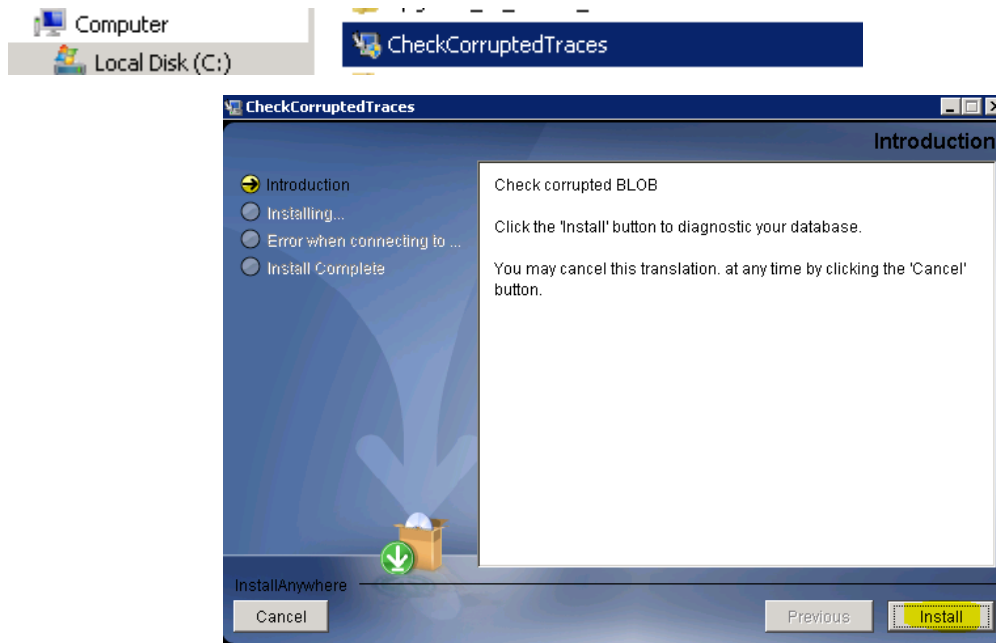
Install over the existing one using OTU tool kit.

ONMSi 2.92 – Release Note

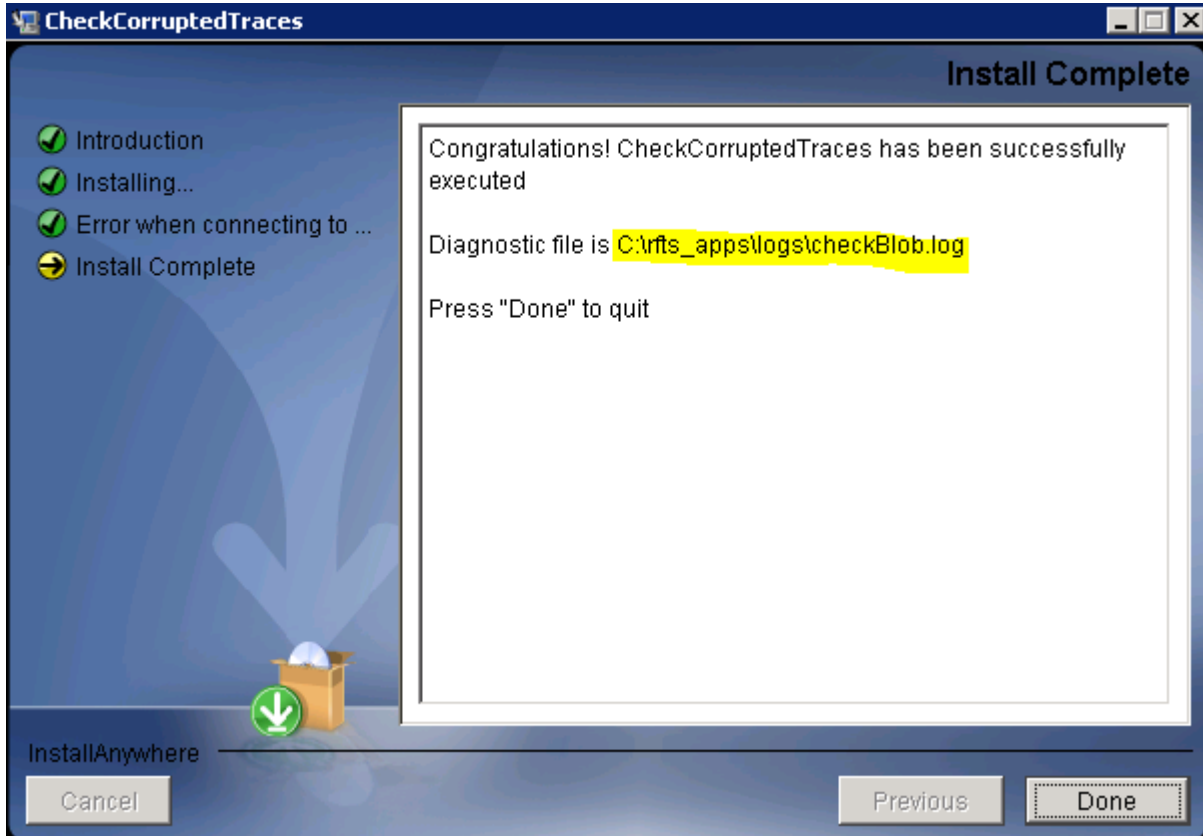
6.7 Database integrity check

- Execute the CheckCorruptedTraces.exe program on active server to identify the corrupted OTDR traces.

Execute the program CheckCorruptedTraces



ONMSi 2.92 – Release Note



- Repair the identified corrupted OTDR traces.

Open the file C:\RFTS_APPS\LOGS\CheckBlob.txt

For the links with repair instruction, copy, paste the url, then redo the reference according to the detail provided below.

```
## Corrupted OTDR Acquisition ID = 522396
## Acquired on: 07-DEC-12 03.57.25.000000 AM
##
Used in monitoring test ID = 522354
Monitoring test name = test1
Link ID = 521227
Link name = BD CT JT01-01-023
ONMSi URL = "http://localhost/app.jsp#LINK_DASHBOARD!id'521227'new'false"
OTDR trace used as REFERENCE of DETECTION of this test
-- REPAIR instructions --
-- Redo the DETECTION acquisition for this test
-- with acquisition parameters:
-- Duration (s): 5
-- Pulse (ns): 1000
-- Resolution (cm): 1000
-- Wavelength (nm): 1650
-- Range (km): 20.463
```